

ENG Power-LED Downlights-Set

⚠ Danger of electrocution!

Be sure to have a professional electrician complete installation. There is no warranty coverage for any halogen lamps and strain reliefs installed without observing European safety directives.

⚠ Fire hazard!

Do not cover lamps with heatinsulating materials.

Ensure that minimum clearance between the lamp and the nearest object which the lamp is shining on is maintained (see label on lamp).



⚠ Danger of injury!

Only use suitable lamps.

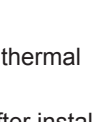
⚠ Caution!

Use HO3VVH2-F 2x 0.75 mm cable only for all connections.

The lamp is suitable for mounting on normally flammable surfaces such as wood and particle board materials which are more than 2 mm thick. Only install lamps so that they shine downwards.

For installation in concrete ceilings and other high thermal loads in the ceiling please check with rutech.

The ceiling clips must be in a horizontal position after installation, not vertical.



correct



wrong

Technical data: See label on lamp.

High-voltage operation:

This is only possible with specially marked lamps (see label on lamp).

Protection class 2 – high voltage 230 V.

Use halogen highvoltage lamps and high-voltage traction relief.

CE compliant with the applicable European directives.



Installation

⚠ Danger of electrocution!

Switch off voltage prior to installation. Ensure that voltage cannot be accidentally switched on again.

1. Saw a hole at the installation location (see package for diameter).
2. Connect the lamp.
3. Mount traction relief.
Insert strain relief in rails and fix into place with screw (see Fig. 1).
4. Connect the strain relief.
Connect the power cord to exposed contacts of the terminal. The socket is already connected to the appropriate contacts. (see Fig. 2).

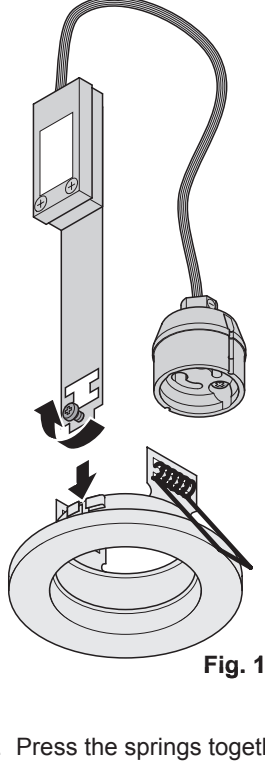


Fig. 1

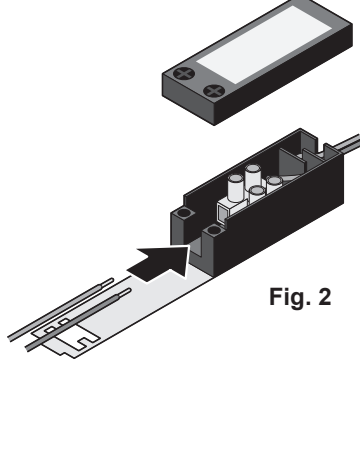


Fig. 2

5. Press the springs together and place the lamp in the sawn out hole (see Figure 3).

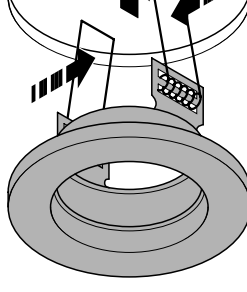


Fig. 3

Replacing the lamp

⚠ Danger of electrocution!

Always disconnect voltage before replacing the lamp.

Models with snap ring (Fig. 4):

1. Press snap ring together and remove.
2. Take the lamp out of the fixture.
3. Insert a new lamp.
4. Put snap ring back in. The snap ring is seated properly when the lamp is fixed in the highest possible position and the end of the snap ring points downward.

Models with removable baffle (Fig. 5):

1. Pull baffle off.
2. Pull lamp out of fixture and remove baffle.
3. Insert a new lamp.
4. Put baffle on.

Models with quarter-turn fastener (Fig. 6):

1. Turn the quarter-turn fastener anticlockwise and remove.
2. Take the lamp out of the fixture.
3. Insert a new lamp.
4. Put quarter-turn fastener on and tighten by turning clockwise.

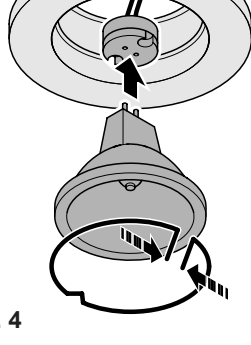


Fig. 4

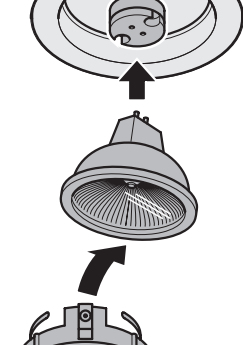


Fig. 5

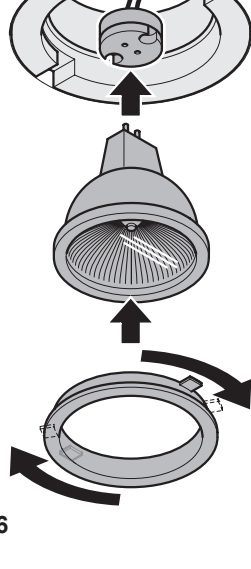


Fig. 6

rutech Licht GmbH & Co. KG

Carl-Zeiss-Str. 15

28857 Syke

PO Box 1437

28848 Syke

Phone: +49 (0) 42 42 95 65-0

Fax: +49 (0) 42 42 95 65-25



E-Mail: info@rutech.de

<http://www.rutech.de>